

Algebra WarmUp 4.1

Name: _____

1. Write an equations in Slope Intercept Form ($y = mx + b$) using the given slope and y-intercept

a. $y = 4x - 2$

$m =$

$b =$

b. $y = -\frac{3}{4}x + 7$

$m = -\frac{3}{4}$

$b = 7$

c. $y = x$

$m = 1$

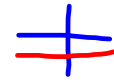
$b = 0$

$y = 1x + 0$

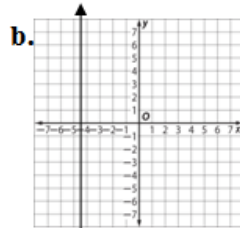
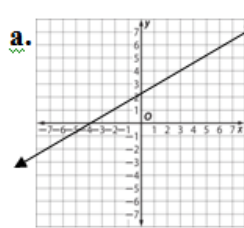
d. $y = -9$

$m = 0$

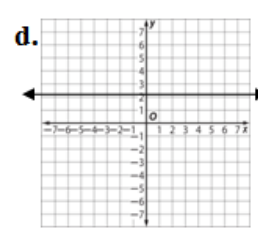
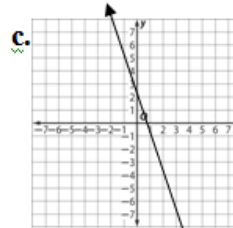
$b = -9$



2. Identify the slopes as positive, negative, zero, or undefined



∞

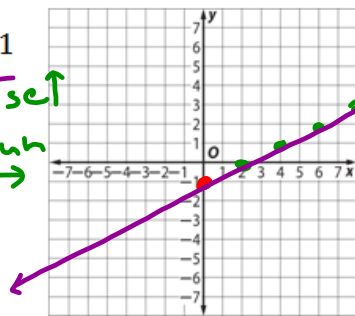


3. Graph the following equations.

a. $y = \frac{1}{2}x - 1$

$m = \frac{1 \text{ rise}}{2 \text{ run}}$

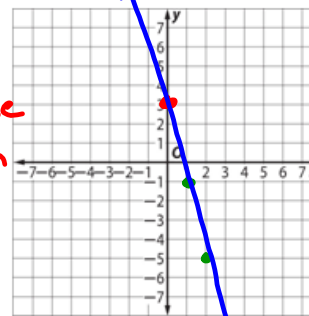
$b = -1$



b. $y = -4x + 3$

$m = -4 \text{ rise}$
 1 run

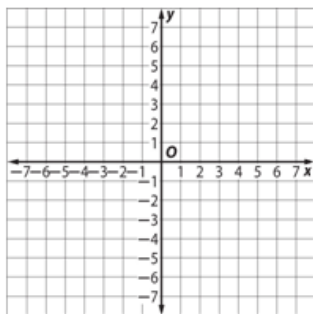
$b = 3$



c. $y = -\frac{2}{3}x + 5$

$m = -\frac{2}{3}$

$b =$



d. $y = x - 4$

$m =$

$b =$

