

# Math 112: #9 A/B

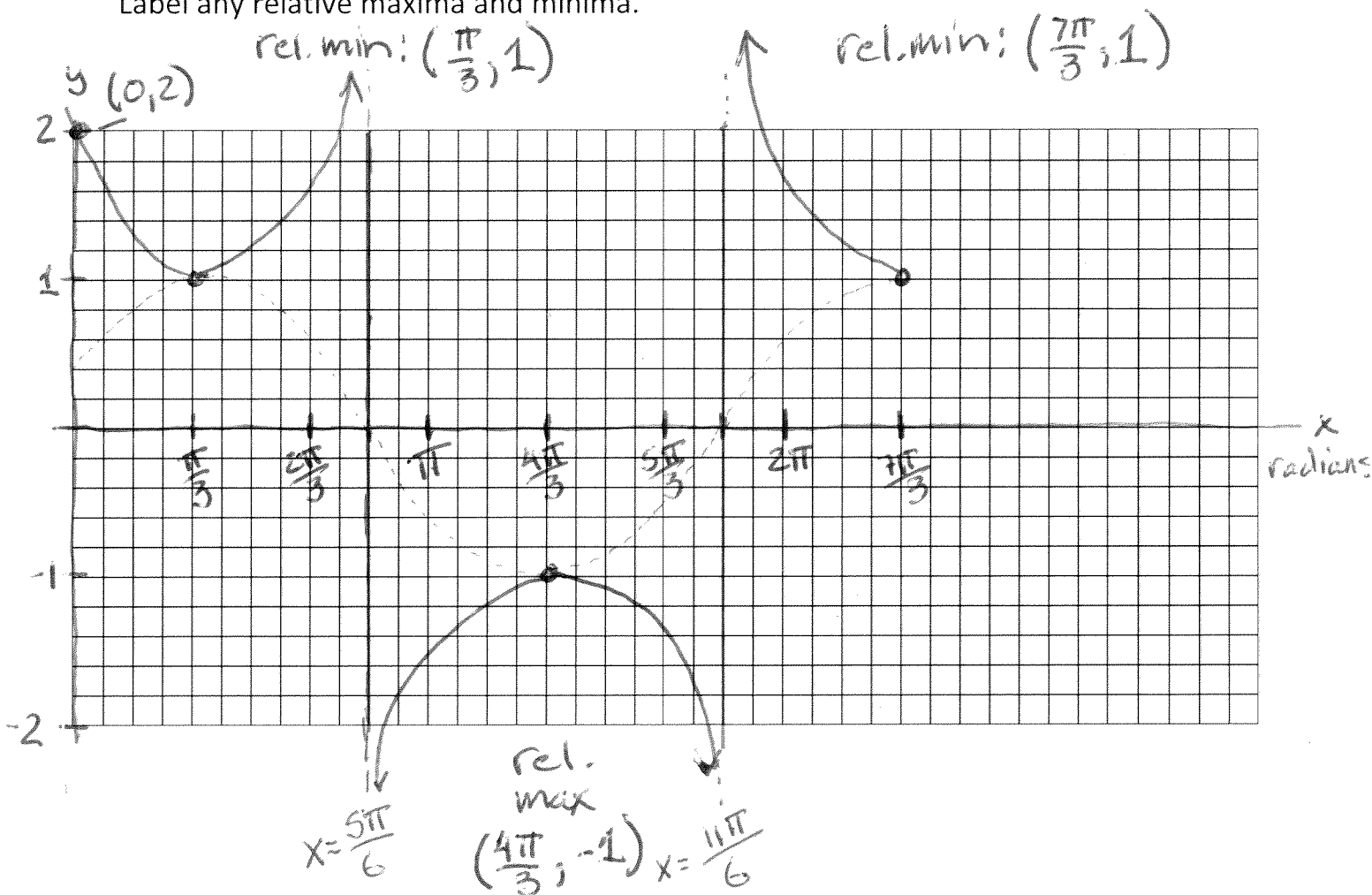
A) (No calculator) Graph, by hand, one full period of the function:

$$f(x) = \sec\left(x - \frac{\pi}{3}\right)$$

amp = 1  
period =  $2\pi$

Phase Shift =  $\frac{\pi}{3}$  right

Label the y-intercept and the two asymptotes that are in the center of the graph.  
Label any relative maxima and minima.



$$\begin{aligned} \text{y-int} &= \sec\left(0 - \frac{\pi}{3}\right) \\ &= \sec\left(-\frac{\pi}{3}\right) = \frac{1}{\cos(-\pi/3)} = \frac{1}{1/2} = 2 \end{aligned}$$

B. (No calculator) Graph, by hand, one full period of the function:

$$f(x) = 1 - 3 \sin 2\left(x - \frac{\pi}{6}\right)$$

V. shift: up 1  
 Flip upside down  
 amp = 3

period =  $\frac{2\pi}{2} = \pi$   
 H. shift: left  $\frac{\pi}{6}$

Label the y-intercept and any zeros. Label any relative maxima and minima.

zero y-int:  $1 - 3 \sin\left(-\frac{2\pi}{6}\right)$   
 $1 - 3\left(-\frac{\sqrt{3}}{2}\right)$   
 $1 + \frac{3\sqrt{3}}{2} \approx 3.6$

